



Measuring Social Cohesion – and its Multiplier Effects

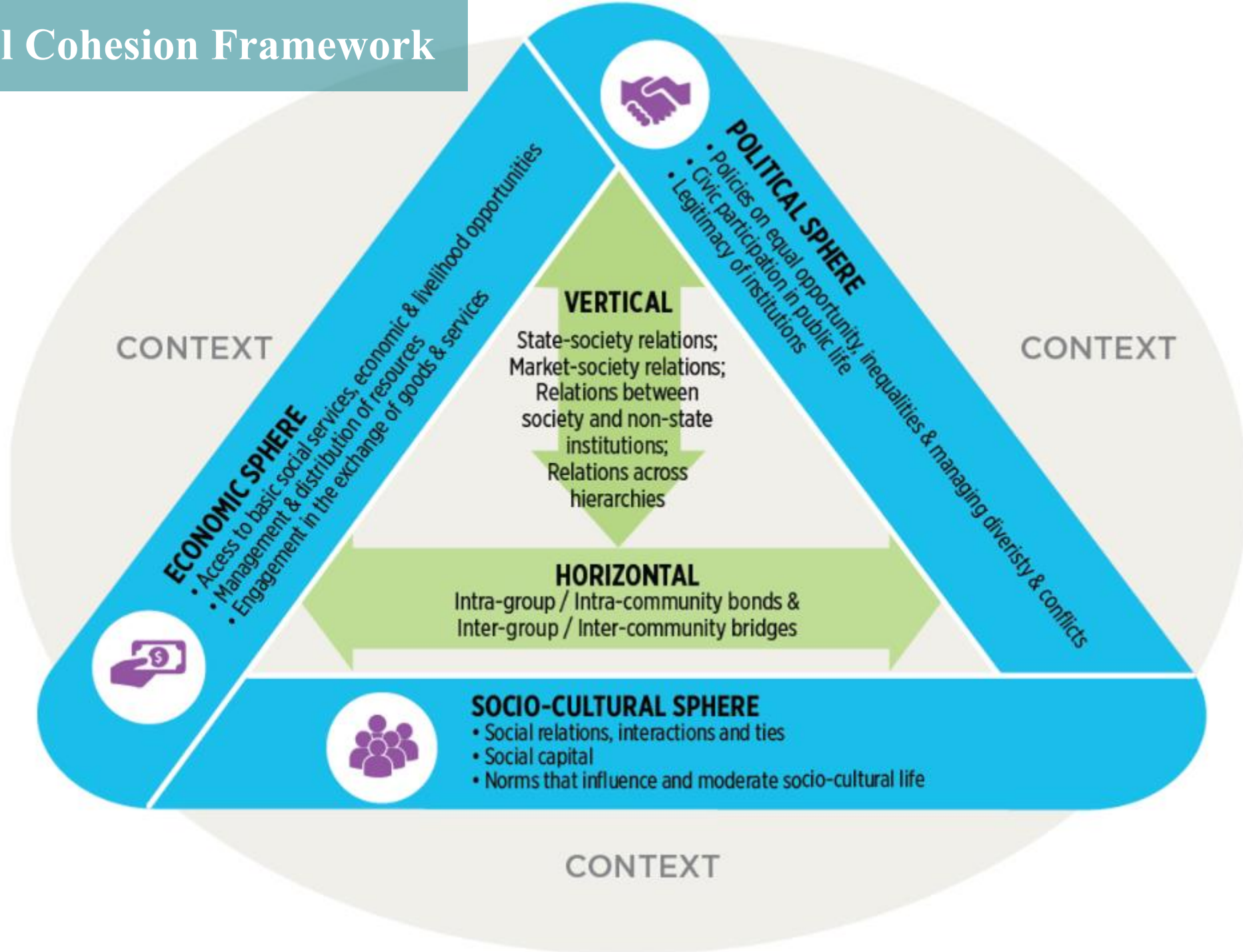
Nell Bolton

CRS Technical Director for Equity, Inclusion and Peacebuilding



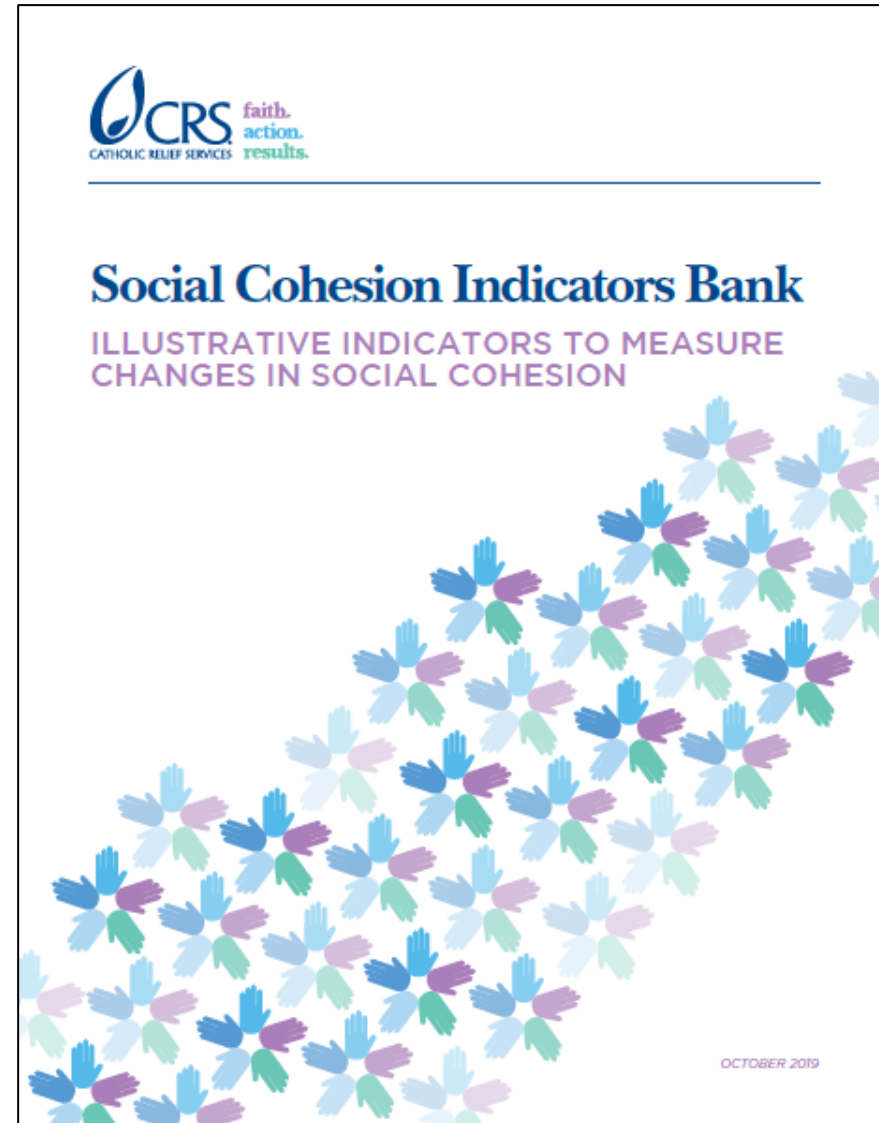


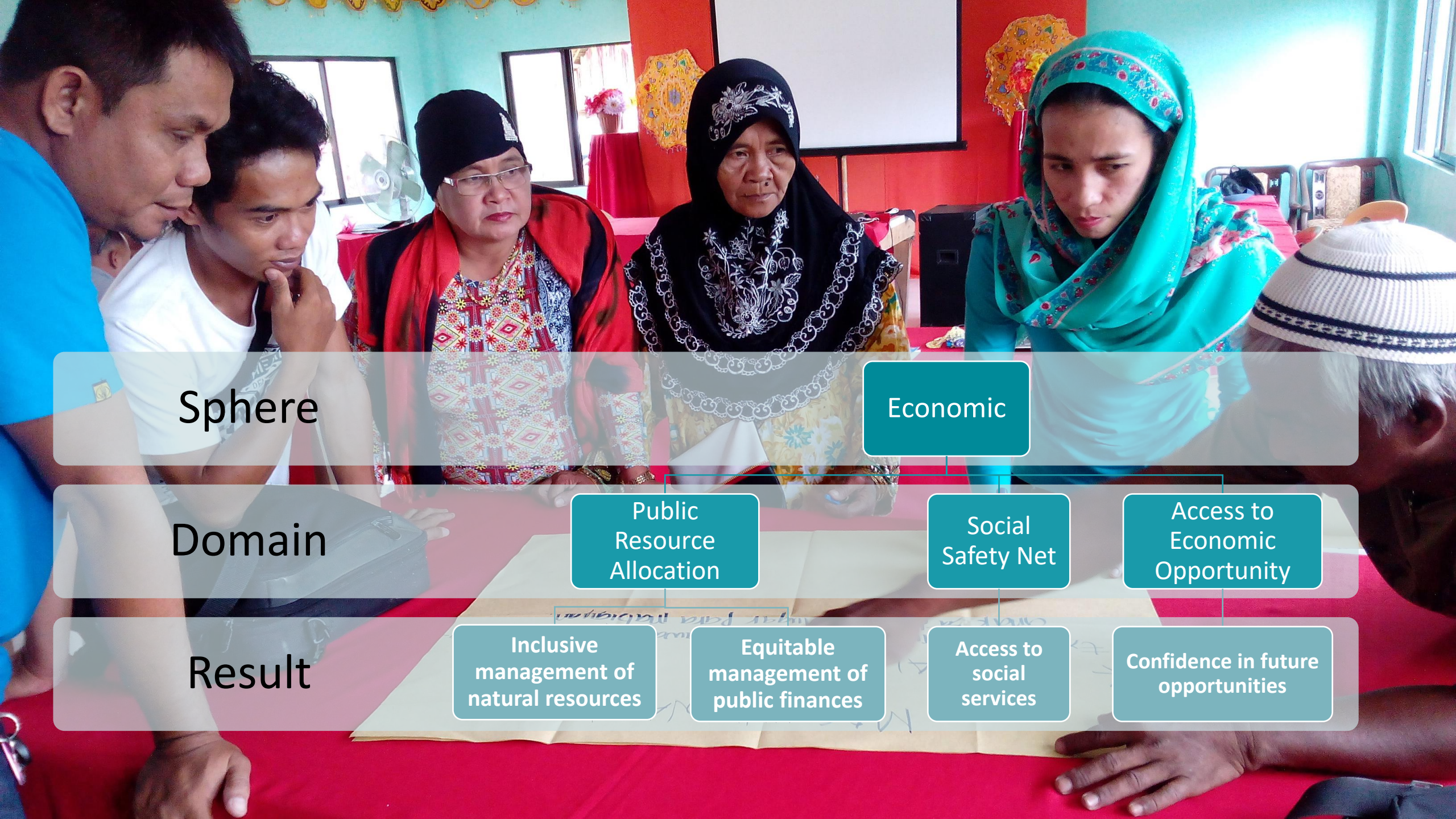
**Social cohesion and justice.
Where thriving societies begin.**



Resource 1: Social Cohesion Indicators Bank

- Responds to demand for measures of program outcome measures
- Based on extensive literature review, including existing projects
- Provides customizable indicators for 31 sample results across 11 domains





Sphere

Economic

Domain

Public Resource Allocation

Social Safety Net

Access to Economic Opportunity

Result

Inclusive management of natural resources

Equitable management of public finances

Access to social services

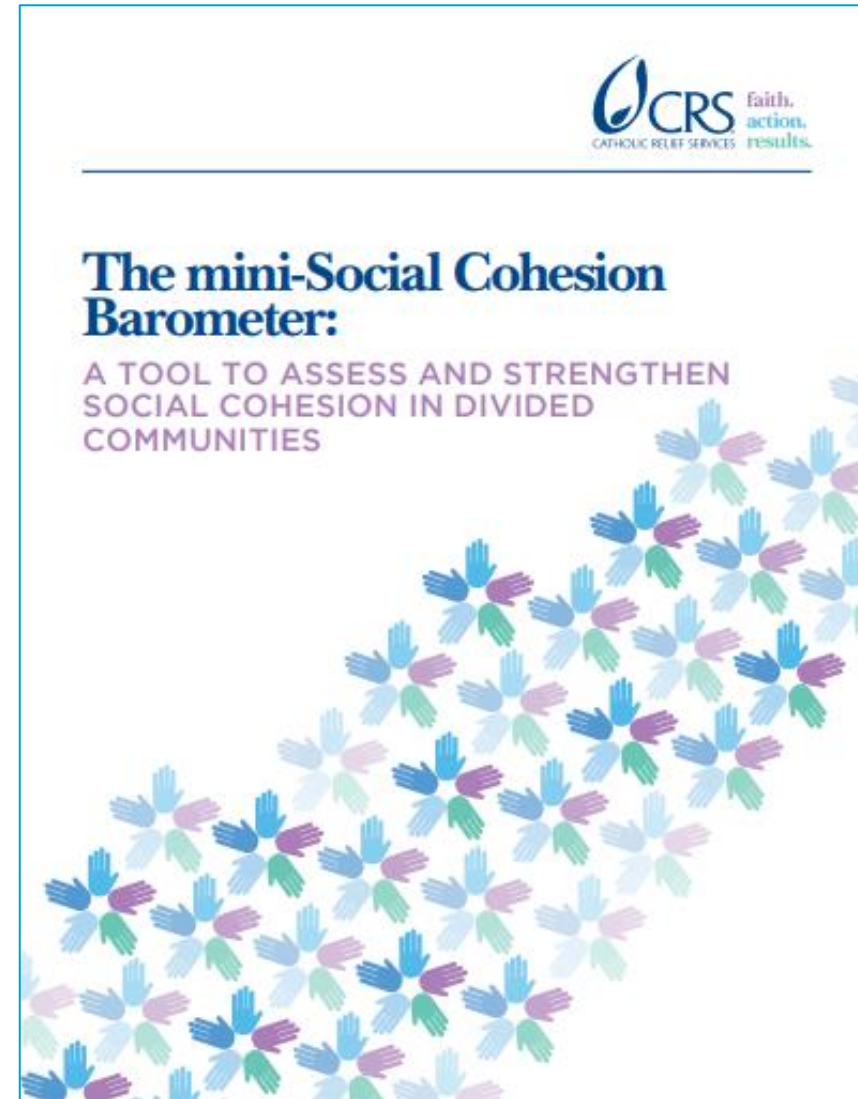
Confidence in future opportunities

Organization of the Indicators Bank

POLITICAL SPHERE			
Domain	Sample results	Subjective Indicators	Objective Indicators
H. Accountable, transparent institutions	20 . Trust in institutions	#/% of people who trust key public institutions to act justly	#/% of public institutions demonstrating improved performance vis-à-vis social benefits accruing to the most vulnerable
	21 . Feeling adequately represented by institutions	#/% of women, minorities, youth who feel that their interests are fairly represented in governmental body X	# of programs/policies/legislation addressing issues of specific concern to women, minorities and youth that have been allocated adequate budget by government body x
	22 . Responsible media	#/% increase in media outlets promoting inclusive rhetoric	#/% journalists reporting that they practice conflict-sensitive journalism
	23 . Inclusionary educational system	#/% of people reporting that the educational system promotes commonalities over divisions.	#/% of schools implementing a curriculum based on shared narratives.
	24 . Constructive civil society	#/% of civil society organizations or associations perceived to contribute to social cohesion	#/% of civil society organizations demonstrating effectiveness in functional areas contributing to social cohesion

Resource 2: Social Cohesion Barometer

- Gauges opinions on the level of social cohesion in a defined context or geographic area
- Designed originally as a workshop tool to:
 - Stimulate discussion and reflection
 - Motivate participants to reach a shared vision of social cohesion
 - Mobilize commitment and action



Mini-SCB Items: 3 Spheres of Social Cohesion

Socio-cultural Sphere

1. I have strong social ties across diverse groups in my community.
2. Members of my community trust each other regardless of identity differences.
3. Everyone is treated with dignity regardless of who they are.
4. People belonging to different identity groups accept and tolerate each other.
5. There are formal and informal opportunities in my community where people belonging to different identity groups connect and interact.
6. My community has the capacity to peacefully manage social problems.

Economic Sphere

1. I am satisfied with my family's existing living conditions, compared to other community members.
2. People in my community help one another in times of need.
3. People have equal access to livelihood and employment opportunities regardless of they are.
4. Public resources are managed fairly for the benefit of all people.
5. People enjoy equal opportunity in accessing basic services of a reasonable quality regardless of who they are.
6. Goods and services are exchanged in a fair environment.

Political Sphere

1. I actively participate in community initiatives to address issues of common concern to all.
2. All people in my community are treated fairly by public officials.
3. We share the same civic values regardless of which identity groups we belong to.
4. Everyone has an opportunity to participate in political processes without fear.
5. People are listened to and their concerns/ideas are considered by government institutions.
6. People have confidence and trust in public structures at local/nat'l levels.

Likert response options

Strongly
Disagree

1

Disagree

2

Neither
agree / disagree

3

Agree

4

Strongly
Agree

5



Organic uses of the SC Barometer:

- Pre-design assessments
- Context monitoring & adaptive management
- Program evaluation

Now: Validation & Guidance

Measuring Social Cohesion Multiplier Effects

What difference does social cohesion make to program outcomes in:

- Agricultural cooperatives' yields and incomes?
- Savings & Internal Lending Group economic well-being?
- Women's nutrition status?
- Community support for school feeding programs?



Methodologies for measuring multiplier effects:

Experimental research:

- Treatment and control communities,
- Qualitative and quantitative methods;

Tools:

- Questionnaires, qualitative interviews and focus groups to follow project outcomes indicators,
- The mini-Social Cohesion Barometer;

Research steps:

- Research baseline or assessment
- Intervention I (treatment communities receive social cohesion + development interventions; control receive only development)
- Research end-line
- Intervention II (control communities receive social cohesion interventions in addition to development)



Sample Results:

- Increase in income generating activities
- Increase in groups' joint economic initiatives
- Increase in productive investment of loans
- Greater likelihood of reporting improved economic condition



Thank you!

Photo by Oscar Leiva for CRS