

IPA Evidence Matters Webinar

Increasing Handwashing Adherence in the Wake of COVID-19

May 11, 2020

Amy Pickering, Tufts University

Robert Dreibelbis, London School of Hygiene and Tropical Medicine

Rachel Steinacher, IPA



ipa
INNOVATIONS FOR
POVERTY ACTION



Today's Panelists



Amy Pickering

Tiampo Family Assistant Professor
Civil and Environmental Engineering,
Tufts University



Robert Dreibelbis

Associate Professor,
London School of Hygiene
and Tropical Medicine



Rachel Steinacher

Associate Director of Program and
Business Development,
Innovations for Poverty Action





ipa

INNOVATIONS FOR
POVERTY ACTION

**Using rigorous research
to reduce poverty &
improve lives**



More than just RCTs



1: Create Stronger Evidence

To deepen knowledge on how to reduce poverty



2: Share Evidence Strategically

To influence conversations & inform decisions

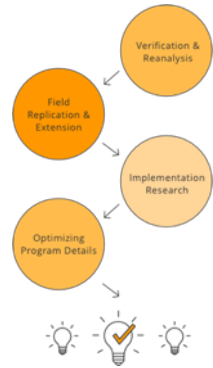


3: Equip Decision-Makers to Use Evidence

To improve the lives of people affected by poverty



IPA at a Glance



17 Years of generating evidence and moving evidence to policy



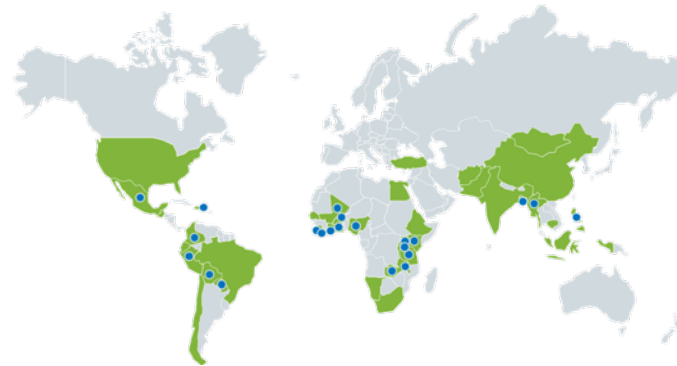
22 Country Offices



700+ Partners



600+ Researchers in our network



850+ Evaluations to date in 51 countries



8 Program Areas



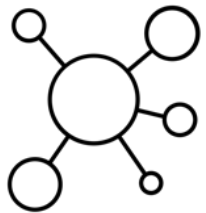
Research for Effective COVID-19 Response (RECOVR)



A rapid response multi-country study



Developing 80+ studies responding to COVID-19



An online hub and global collaboration to ensure data flows to inform decisions



PROGRAM AREAS

REGION

COUNTRIES

RESULTS STATUS

DATA COLLECTION MODE

IMPACT GOALS

SEARCH TITLES

A Rapid Survey of Citizens' Knowledge, Attitudes, and Practices (KAP) with Respect to COVID-19 in Tanzania

Twaweza is collecting data on citizens' knowledge, attitudes, and practices (KAP) related to COVID-19. This will be done through a series of mobile phone surveys of a representative sample of the country's adult population.

Researchers: Aidan Eyakuze, Baruani Mshale

Country: Tanzania

Program Area: Governance, Health, Social Protection

Partners: Twaweza, Ministry of Health, Tanzania

Study Type: Descriptive / Surveillance

Timeline: April-December 2020

Implemented by IPA: No

Implementing Organization: Twaweza

Impact Goals: Build resilience and protect the financial health of families and individuals; Improve social-safety net responses; Reduce COVID-19 transmission rates

Outcomes of Interest: Knowledge, attitudes, and practices related to COVID-19

Data Collection Mode: CATI (Computer-assisted telephone interviewing)

Results Status: No Results Yet



A Rapid Survey OF Citizens' Knowledge, Attitudes and Practices (KAP) With Respect to COVID-19 in Uganda

Twaweza is collecting data on citizens' knowledge, attitudes and practices (KAP) related to COVID-19. This will be done through a series of mobile phone surveys of a representative sample of the country's adult population.

Researchers: Violet Alinda, Aidan Eyakuze, Baruani Mshale, Marie Nanyanzi, Melania Akinyi Omengo

Country: Uganda

Program Area: Agriculture, Governance, Health, Social Protection

Partners: Ministry of Health, Uganda, Food Rights Alliance

Study Type: Descriptive / Surveillance

Timeline: March-August 2020



A photograph of a densely packed informal settlement, likely a slum, with a semi-transparent blue circle overlaid in the center. The circle contains the text "Navigating this crisis requires innovation and evidence" in white. The background shows a dirt path winding through the settlement, with people and animals walking. The buildings are made of brick and have corrugated metal roofs. The sky is blue with some clouds.

**Navigating this
crisis requires
innovation and
evidence**

Enabling Handwashing

Handwashing is recommended to slow the spread of COVID-19 and requires:



Handwashing facilities



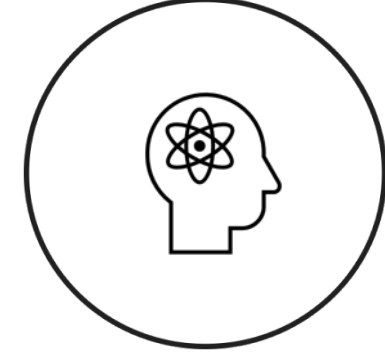
Water



Soap



Access to information



Behavioral triggers



Enabling Handwashing

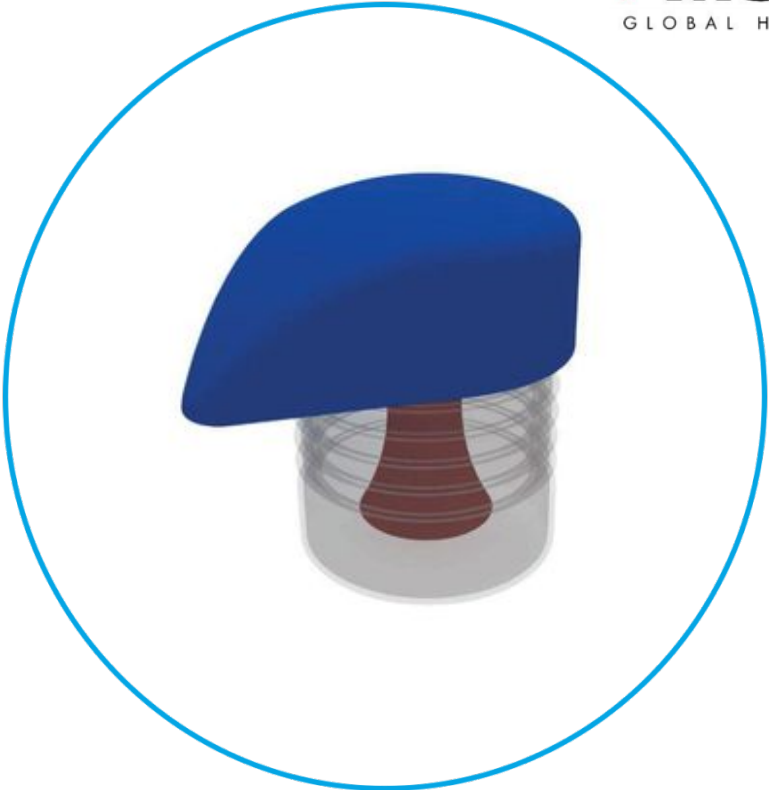
Human-Centered Design and Innovation – the Povu Poa



Handwashing facilities



Water



Soap

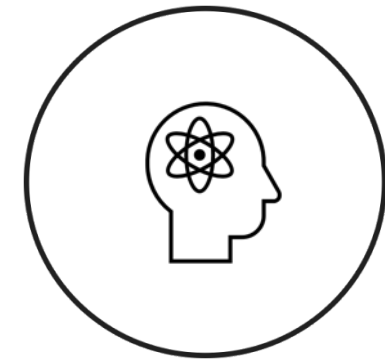


Enabling Handwashing

Human-Centered Design and Innovation – the Povu Poa



**Access to
information**



**Behavioral
triggers**



Enabling Handwashing

Handwashing is recommended to slow the spread of COVID-19 and requires:



Handwashing facilities



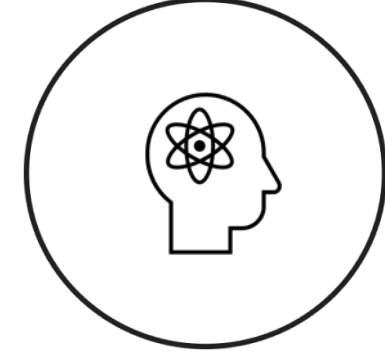
Water



Soap



Access to information



Behavioral triggers

