

# Peace & Recovery

*Evidence for Stability*



Most of the world's people living in extreme poverty are in fragile states, yet rigorous evidence on how to build peace and stability is still limited.

**We are working to change that.**



**KUTUPALONG REFUGEE  
CAMP, COX'S BAZAR,  
BANGLADESH, 2018.**

*PHOTO* SEBASTIAN CHASKEL

# Competitive Fund for Peace & Recovery

Innovations for Poverty Action's Peace & Recovery (P&R) competitive research fund supports randomized evaluations and related research on reducing violence and fragility, promoting peace, and preventing, managing, and recovering from crises. The program supports policy-relevant studies that develop, illustrate, or test fundamental theories of peace, violence, and recovery, especially those that challenge common beliefs, pioneer innovative interventions, and produce evidence where little currently exists. To date, we have funded over 80 projects in approximately 30 countries.



POLICE DURING 21N  
SOCIAL PROTESTS,  
BOGOTÁ, COLOMBIA, 2020.

PHOTO RICARDO ARCE

## P&R's Contributions to the Field

### Building the Evidence Base in Fragile Contexts to Inform Policy & Practice

Little rigorous evidence exists on the efficacy of many common peacebuilding or humanitarian programs, leaving policymakers and practitioners without complete and actionable information about how to invest limited aid resources. P&R's project portfolio is changing the conversation in both academic and policy circles by producing **new** and **generalizable** insights about human behavior and intervention efficacy in fragile, conflict, and violence-affected contexts.

This evidence is directly informing policies and programs at the local and national levels. For example, in Turkey, the Ministry of Education is **scaling up** an [inter-ethnic social cohesion program](#) throughout the country in the second phase of its refugee integration program, [PICTES](#). The decision was informed by the results of the P&R-supported evaluation of an empathy education program to foster inclusion, trust, and reciprocity towards Syrian refugees.

Please see our [Program Area Brief](#) for further illustration of how P&R's investments are building a bridge between evidence and practice.

Read more [here >>](#)

### Building Research Infrastructure in Fragile Settings

The research infrastructure needed for impact evaluations is scant in many fragile settings, leaving a vacuum of rigorous evidence to inform program design in these contexts. P&R is strengthening the development of such infrastructure. For instance, P&R support led to:

- » The creation of the IPA Nigeria office, which is now leading large-scale randomized evaluations on migration and social cohesion and acting as a key policy partner for civil society and government actors,
- » The establishment of a research hub to collect high quality data and run rigorous evaluations in Cox's Bazar, Bangladesh, a district hosting almost one million Rohingya refugees. The hub has run the [Cox's Bazar Panel Survey](#) and works with policymakers and program implementers to evaluate innovative interventions for refugees and host communities, providing early evidence on effective programming for forcibly displaced populations and the first rigorous evidence on the Rohingya refugee response.

Read more [here >>](#)



LIBERIA, 2010.

PHOTO: GLENNA GORDON

## Support for Early-Career and LMIC-Based Researchers

P&R's exploratory grants are earmarked for early career researchers and researchers from low- and middle-income countries (LMICs) who may not have access to other sources of flexible funding to develop preliminary research ideas. These grants have allowed researchers to design pilots and full impact evaluations, many of which P&R has gone on to support.

Read more [here >>](#)

## Supporting Innovations in Measurement

Complex social phenomena (like trust and increased tolerance) are notoriously hard to measure due to reporting bias concerns, the subjectivity of concepts, and the often complicated task of collecting data in the rapidly-shifting context of conflict-affected areas. P&R supports studies that methodologically push the field forward through innovations in measurement.

For instance, a [P&R-supported project in Iraq](#), examined the impact of "intergroup contact" through mixed soccer teams by measuring whether participants voted for members of the "outgroup" to attend a sportsmanship prize, continued to practice with members of the "outgroup" after the league was over, or chose to attend a mixed social event.

Read more [here >>](#)

## Academic Leadership

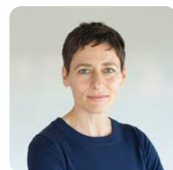
### Peace & Recovery Program



#### Christopher Blattman

*Ramalee E. Pearson Professor of Global Conflict Studies*

**University of Chicago**

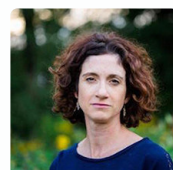


#### Betsy Levy Paluck

*Professor of Psychology & Public Affairs*

**Princeton University**

### Humanitarian & Forced Displacement Initiative



#### Jeannie Annan

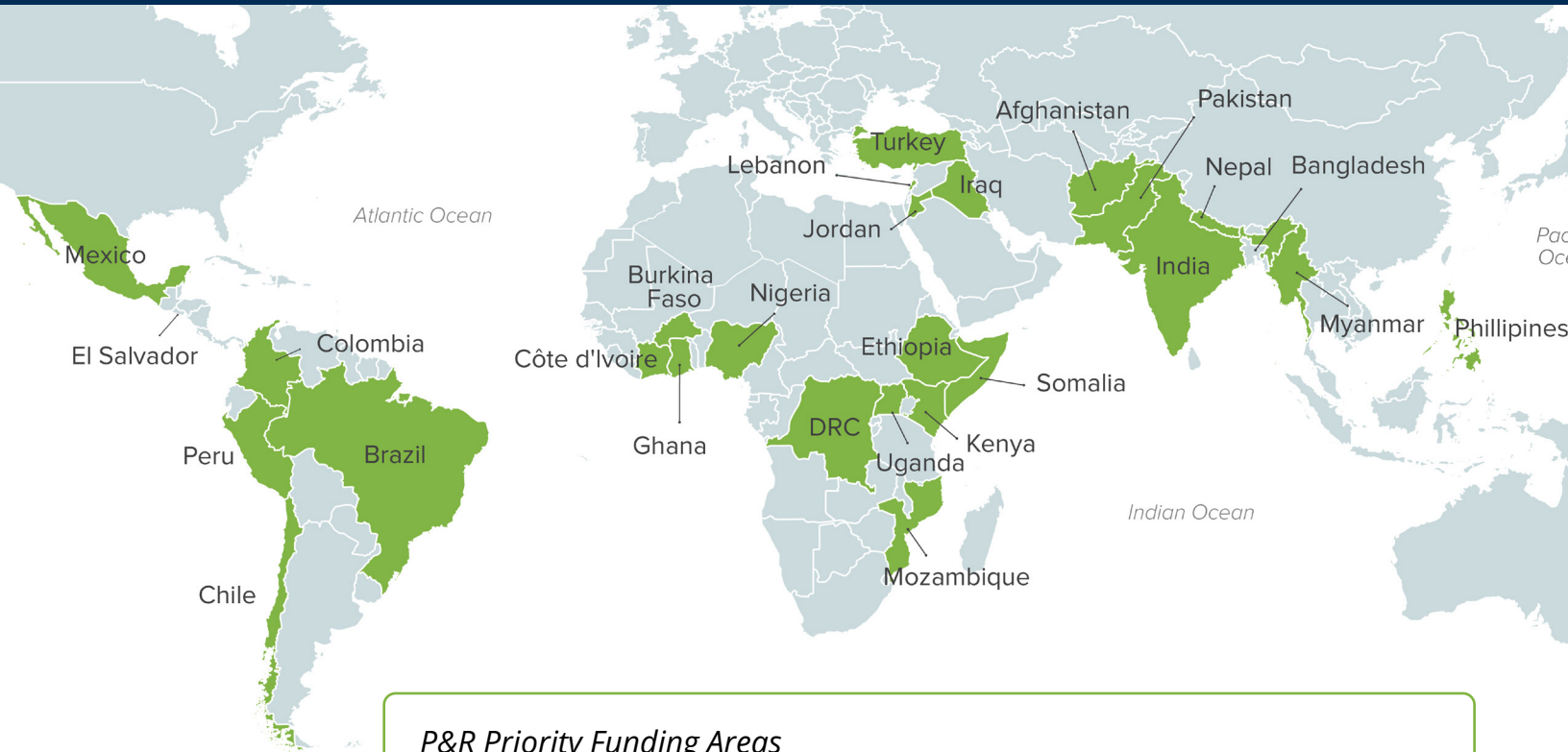
*Chief Research & Innovation Officer*  
**International Rescue Committee**



#### Mushfiq Mobarak

*Professor of Economics*  
**Yale University**

# Countries with P&R-funded Projects



## *P&R Priority Funding Areas*

- » Participation and organization of violence
- » Social order without the state
- » State and institution building
- » Service delivery and development in unstable or violent contexts
- » Forced displacement
- » Peacebuilding and conflict resolution
- » Crisis prevention, response, and recovery
- » Homicide in Latin America and the Caribbean

## Humanitarian and Forced Displacement Initiative (HFDI)

A record number of people are forcibly displaced as a result of conflict, persecution, or violence, a number which is expected to only rise in the coming decades.<sup>1</sup> Despite the scale of this challenge, there is little evidence about which policies and programs improve the lives of forcibly displaced populations and host communities, and at what cost.

IPA's [Humanitarian and Forced Displacement Initiative](#) is supporting the generation of robust data on the impact of

displacement crises around the world to help decision-makers develop better policies and programs, and invest limited development and humanitarian assistance funds effectively. Currently, IPA is supporting or implementing over half of the ongoing rigorous research on forced displacement and is building infrastructure for humanitarian research in displacement-affected contexts, including Bangladesh, East Africa, and Colombia.

**Writer:** Daphne Schermer & Nessa Kenny | **Editors:** Ana Tamayo & Ricardo Morel | **Designer:** Ion Florie Ho

**Peace and Recovery Program:** [peace@poverty-action.org](mailto:peace@poverty-action.org) | [poverty-action.org/peace](https://poverty-action.org/peace)

Innovations for Poverty Action (IPA) is a research and policy nonprofit that discovers and promotes effective solutions to global poverty problems. IPA designs, rigorously evaluates, and refines these solutions and their applications together with researchers and local decision-makers, ensuring that evidence is used to improve the lives of the world's poor. Our well-established partnerships in the countries where we work, and a strong understanding of local contexts, enable us to conduct high-quality research. This research has informed hundreds of successful programs that now impact millions of individuals worldwide.

